

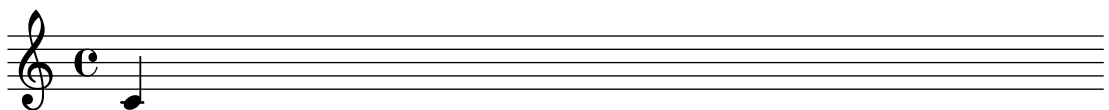
gregorian-transcription.ly

Modern transcriptions of gregorian music. Gregorian music has no measure, no stems; it uses only half and quarter notes, and two types of barlines, a short one indicating a rest, and a second one indicating a breath mark.



header.ly

The standard header that ought to be in top of a file.



jazz-combo.ly

Jazz tune for combo (horns, guitar, piano, bass, drums).

Trumpet

Alto Sax

Bari Sax

Trombone

Guitar

Piano

Bass

Drums

B $\Delta$  C $\sharp$ m<sup>7</sup>

Solo

Cm $\Delta$  D $\Delta$ /9

melody-chords.ly

Lead sheet format: chords with melody.

Cm Fm<sup>7</sup> G $\Delta$  C+ D $^{\circ}$  B

melody-lyrics-chords.ly

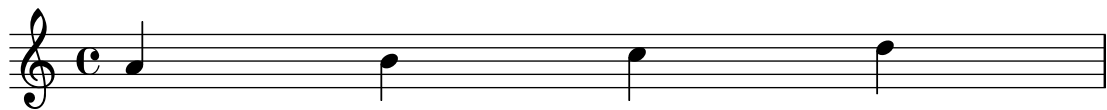
Popsong format: chords, melody and lyrics.

A C

Aaa Bee Cee Dee

melody-lyrics.ly

Melody and lyrics.



Aaa

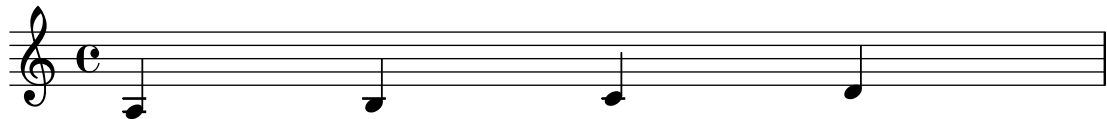
Bee

Cee

Dee

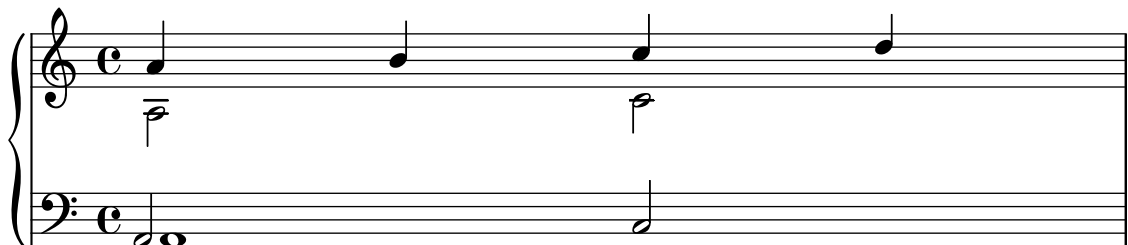
melody.ly

Only a melody.



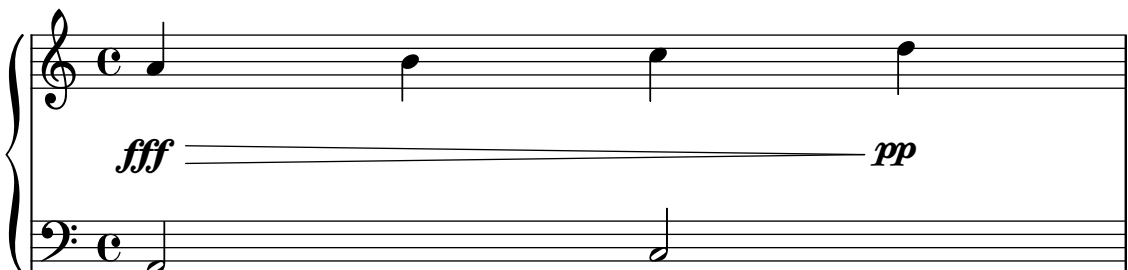
piano-4-voices.ly

Polyphonic piano music.



piano-dynamics.ly

Dynamics on a separate line, neatly centered between staves.

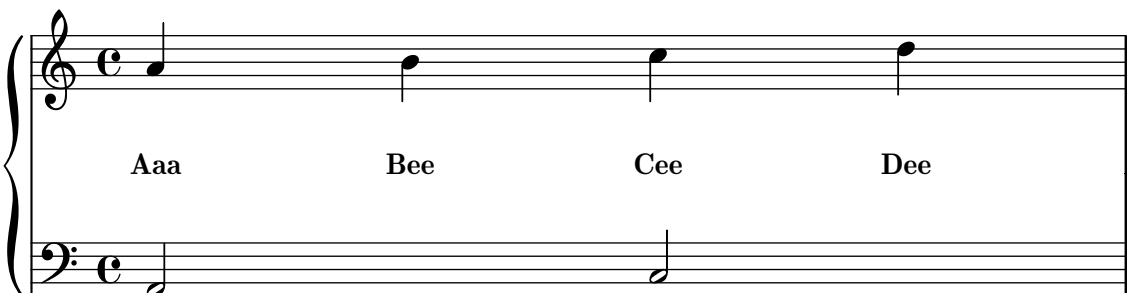


Red.



piano-lyrics.ly

Lyrics between two staves.



piano-melody-lyrics.ly

Classical song format: one staff with melody and lyrics, and piano accompaniment.

A musical score in common time (C) for a piano piece. The vocal line is on a single staff with a treble clef, featuring four quarter notes: A4, B4, C5, and D5. The piano accompaniment consists of two staves (treble and bass clef). The right hand plays four quarter notes: A4, B4, C5, and D5. The left hand plays a single half note: A3.

Aaa                  Bee                  Cee                  Dee

piano.ly  
Simple piano music.

A musical score in common time (C) for a piano piece. The vocal line is on a single staff with a treble clef, featuring four quarter notes: A4, B4, C5, and D5. The piano accompaniment consists of two staves (treble and bass clef). The right hand plays four quarter notes: A4, B4, C5, and D5. The left hand plays a single half note: A3.

Piano

satb.ly  
Four-part (SATB) vocal score.

A musical score in common time (C) for a four-part (SATB) vocal score. The score is written for four voices: Soprano, Alto, Tenor, and Bass. The Soprano part has four quarter notes: A4, B4, C5, and D5. The Alto part has four quarter notes: G4, F4, E4, and D4. The Tenor part has four quarter notes: E3, D3, C3, and B2. The Bass part has four quarter notes: A2, G2, F2, and E2. The lyrics are: hi, ha, hu, ho.

hi                  hi                  hi                  hi

ha                  ha                  ha                  ha

hu                  hu                  hu                  hu

ho                  ho                  ho                  ho