

LilyPond

The music typesetter

MIDI test suite

The LilyPond development team

Table of Contents

Introduction	1
Regression test cases	2
ambitus-after-midi.ly	2
articulate-accel-midi.ly	2
articulate-repeat-midi.ly	2
articulate-trill-midi.ly	2
beat-structure-by-metronome-12-8-midi.ly	3
beat-structure-by-metronome-8-8-midi.ly	3
crescendo-gap-compatible-target-midi.ly	3
crescendo-return-crescendo-midi.ly	3
crescendo-return-louder-target-midi.ly	3
crescendo-return-softer-target-midi.ly	3
crescendo-return-unspecified-target-midi.ly	3
crescendo-single-compatible-target-midi.ly	4
crescendo-single-unspecified-target-midi.ly	4
decrescendo-multiple-compatible-target-midi.ly	4
decrescendo-single-contrary-target-midi.ly	4
dynamic-initial-midi.ly	4
dynamic-voices-sequential-midi.ly	4
dynamic-voices-simultaneous-midi.ly	4
key-initial-midi.ly	4
key-option-all-staves-midi.ly	5
key-option-midi.ly	5
lyric-combine-switch-voice-midi.ly	5
lyric-repeat-count-midi.ly	5
lyric-tie-midi.ly	5
lyrics-addlyrics-midi.ly	5
midi-overlapping-notes-midi.ly	6
midi-polymeter-midi.ly	6
midi2ly-long-notes-midi.ly	6
music-after-fine-warning-midi.ly	6
pan-position-midi.ly	6
partcombine-midi.ly	7
performance-name-utf8-midi.ly	7
quantize-duration-2-midi.ly	7
quantize-duration-midi.ly	7
quantize-start-midi.ly	7
rehearsal-mark-midi.ly	7
repeat-segno-midi.ly	8
rest-dynamic-midi.ly	8
rest-midi.ly	8
satb-template-on-two-staves-with-verses-midi.ly	8
satb-template-with-keyboard-reduction-midi.ly	9
section-label-midi.ly	9
sequence-name-midi.ly	9
sequence-name-scoping-midi.ly	9
spacer-no-notes-midi.ly	10

staff-map-instrument-midi.ly	10
staff-map-voice-midi.ly	10
tempo-accel-granularity-midi.ly	10
tempo-accel-jump-midi.ly	10
tempo-accel-simultaneous-midi.ly	11
tempo-accel-skiptypesetting-beginning-midi.ly	11
tempo-accel-skiptypesetting-end-midi.ly	11
tempo-accel-skiptypesetting-middle-midi.ly	11
tempo-accel-tempo-rit-midi.ly	12
tempo-accel-warning-in-progress-midi.ly	12
tempo-accel-warning-unterminated-midi.ly	12
tempo-midi.ly	12
tempo-rit-a-tempo-accel-midi.ly	13
tempo-rit-a-tempo-midi.ly	13
tempo-rit-granularity-midi.ly	13
time-signature-alternating-fraction-midi.ly	13
time-signature-midi.ly	13
time-signature-unsupported-midi.ly	14
varcoda-midi.ly	14
voice-2-midi.ly	14
voice-4-midi.ly	14
voice-5-midi.ly	14

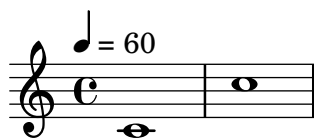
Introduction

This document presents regression tests for LilyPond development that are related to MIDI output and thus do not contain visually significant output in most cases; it mainly exists for completeness and to make the test documentation better available.

In the web version of this document, you can click on the figure for each example to see the corresponding input file.

Regression test cases

ambitus-after-midi.ly



articulate-accel-midi.ly

Musical notation for 'articulate-accel-midi.ly'. It consists of five staves of music, each starting with a measure number (1, 3, 5, 7, 9) and a tempo marking. The notation shows a sequence of eighth notes with repeat signs, where the tempo changes between measures. The tempo markings are: 60, 100, 60, 100, 60 on the first staff; 100, 60, 66.75, 60 on the second staff; 36, 60, 36, 60 on the third staff; 36, 60, 36, 60 on the fourth staff; and 54, 60, 54, 60 on the fifth staff.

articulate-repeat-midi.ly

`\articulate` correctly handles repeats with alternatives. They are played in the same order as their visual rendition suggests.

Musical notation for 'articulate-repeat-midi.ly'. It shows a bass clef, a common time signature (C), and a tempo marking of ♩ = 60. The notation consists of four measures of music, each containing a quarter note followed by a repeat sign. The notes are G2, A2, B2, and C3.

articulate-trill-midi.ly

Musical notation for 'articulate-trill-midi.ly'. It consists of two staves of music. The first staff shows a bass clef, a common time signature (C), and a tempo marking of ♩ = 60. The notation is a dense trill of eighth notes between G2 and A2. The second staff, starting with a measure number 2, shows a single quarter note G2 followed by a repeat sign.

beat-structure-by-metronome-12-8-midi.ly

Musical score for 'beat-structure-by-metronome-12-8-midi.ly'. The score consists of two staves. The top staff is labeled 'ew:' and has a tempo marking of ♩ = 60. It features three measures of music in 12/8 time, each containing a sequence of eighth notes. The bottom staff is a treble clef staff with a triplet marking '3' over the first measure, also containing a sequence of eighth notes in 12/8 time.

beat-structure-by-metronome-8-8-midi.ly

Musical score for 'beat-structure-by-metronome-8-8-midi.ly'. The score consists of one staff labeled 'ew:' with a tempo marking of ♩ = 60. It features four measures of music in 8/8 time, each containing a sequence of eighth notes.

crescendo-gap-compatible-target-midi.ly

Musical score for 'crescendo-gap-compatible-target-midi.ly'. The score consists of one staff labeled 'ew:' with a tempo marking of ♩ = 60. It features four measures of music in common time (C), each containing a sequence of quarter notes.

crescendo-return-crescendo-midi.ly

Musical score for 'crescendo-return-crescendo-midi.ly'. The score consists of one staff labeled 'ew:' with a tempo marking of ♩ = 60. It features four measures of music in common time (C), each containing a sequence of quarter notes.

crescendo-return-louder-target-midi.ly

Musical score for 'crescendo-return-louder-target-midi.ly'. The score consists of one staff labeled 'ew:' with a tempo marking of ♩ = 60. It features four measures of music in common time (C), each containing a sequence of quarter notes.

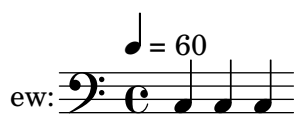
crescendo-return-softer-target-midi.ly

Musical score for 'crescendo-return-softer-target-midi.ly'. The score consists of one staff labeled 'ew:' with a tempo marking of ♩ = 60. It features four measures of music in common time (C), each containing a sequence of quarter notes.

crescendo-return-unspecified-target-midi.ly

Musical score for 'crescendo-return-unspecified-target-midi.ly'. The score consists of one staff labeled 'ew:' with a tempo marking of ♩ = 60. It features four measures of music in common time (C), each containing a sequence of quarter notes.

crescendo-single-compatible-target-midi.ly



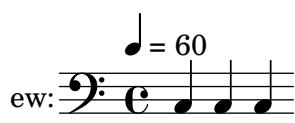
crescendo-single-unspecified-target-midi.ly



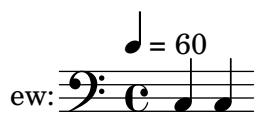
decrescendo-multiple-compatible-target-midi.ly



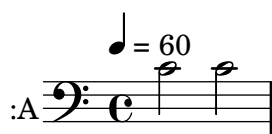
decrescendo-single-contrary-target-midi.ly



dynamic-initial-midi.ly



dynamic-voices-sequential-midi.ly



dynamic-voices-simultaneous-midi.ly



key-initial-midi.ly

keys work in MIDI, this is d-minor



key-option-all-staves-midi.ly

Midi2ly `-key` works on all staves, this is G major (`-key=1`)

Two staves of music. The top staff is labeled 'treble:one' and the bottom staff is labeled 'bass:two'. Both staves are in G major (one sharp) and common time. The tempo is marked as quarter note = 60. The melody consists of a quarter note G4, a quarter note A4, and a quarter note B4.

key-option-midi.ly

midi2ly's option `--key` works, this is F major.

A single staff of music labeled 'trackB:voiceA' in F major (two flats) and common time. The tempo is marked as quarter note = 60. The melody consists of a quarter note F4, a quarter note G4, a quarter note A4, a quarter note B4, a quarter note C5, a quarter note B4, a quarter note A4, and a quarter note G4.

lyric-combine-switch-voice-midi.ly

It is possible to switch the voice that `\lyricsto` follows.

A single staff of music labeled ':Va' in G major and common time. The tempo is marked as quarter note = 60. The melody consists of a quarter note G4, a quarter note A4, and a quarter note B4. Below the staff, the lyrics 'Hoo hah.' are written.

lyric-repeat-count-midi.ly

A single staff of music in G major and common time. The tempo is marked as quarter note = 60. The melody consists of a quarter note G4, a quarter note A4, a quarter note B4, a quarter note C5, a quarter note B4, a quarter note A4, a quarter note G4, a quarter rest, a quarter note G4, a quarter note A4, a quarter note B4, and a quarter note C5. Below the staff, the lyrics 'Lo rem. Ip sum. Do lor. Sit. A met.' are written.

lyric-tie-midi.ly

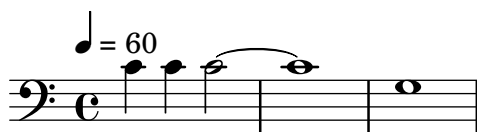
A single staff of music labeled ':uniqueContext0' in G major and common time. The tempo is marked as quarter note = 60. The melody consists of a quarter note G4, a quarter note A4, a quarter note B4, a quarter note C5, a quarter note B4, a quarter note A4, and a quarter note G4. Below the staff, the lyrics 'a_a a_a_a' are written, with ties under the first 'a' and the first 'a' of the second group.

lyrics-addlyrics-midi.ly

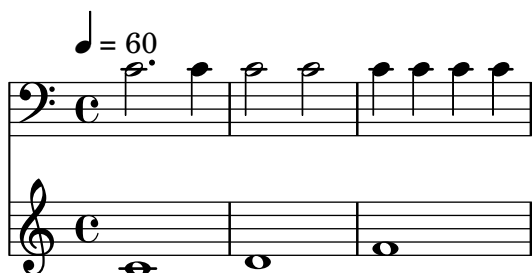
Lyrics are preserved

A single staff of music labeled ':uniqueContext0' in G major and 6/8 time. The tempo is marked as quarter note = 60. The melody consists of a quarter note G4, an eighth note A4, a quarter note B4, an eighth note C5, a quarter note B4, an eighth note A4, a quarter note G4, and an eighth note F#4. Below the staff, the lyrics 'Girls and boys come out to play,' are written.

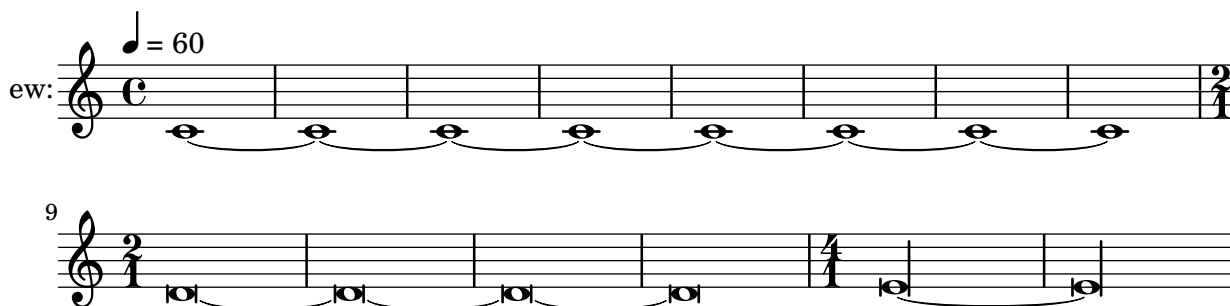
midi-overlapping-notes-midi.ly



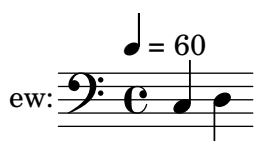
midi-polymeter-midi.ly



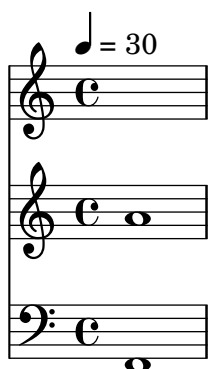
midi2ly-long-notes-midi.ly



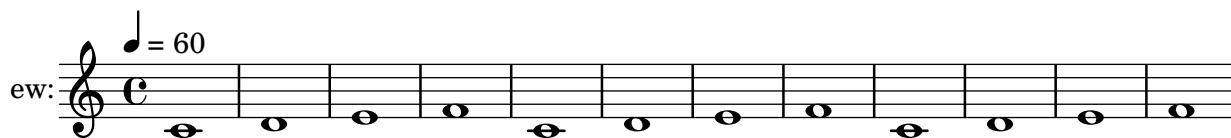
music-after-fine-warning-midi.ly



pan-position-midi.ly



repeat-segno-midi.ly

ew:  $\text{♩} = 60$

rest-dynamic-midi.ly

LilyPond respects rests, also when there are dynamics

 $\text{♩} = 60$

rest-midi.ly

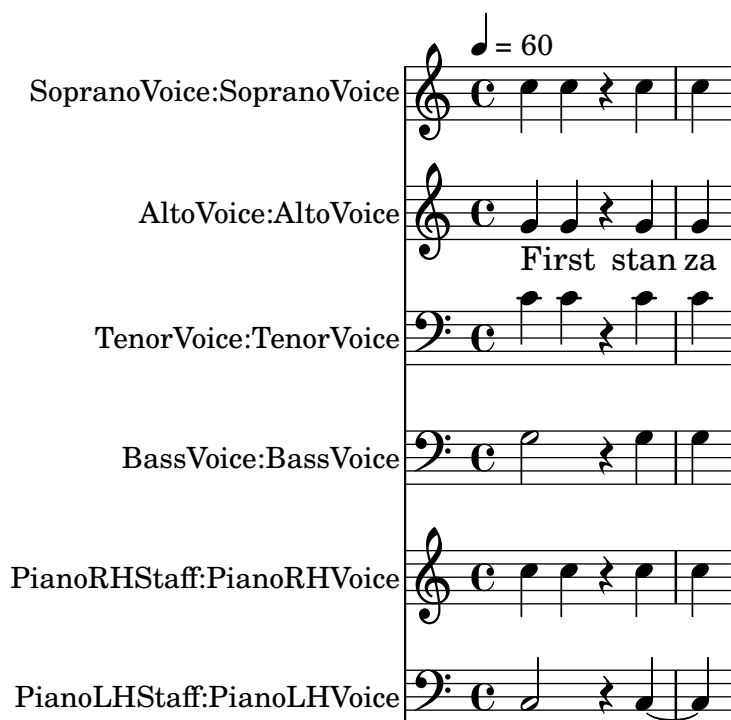
midi2ly identifies rests

trackB:voiceA  $\text{♩} = 60$

satb-template-on-two-staves-with-verses-midi.ly

The printed output should have a one-measure SATB score on two staves with five verses and piano accompaniment.

The MIDI output should include an extra beat of silence where the printed output has a caesura mark.

 $\text{♩} = 60$

SopranoVoice:SopranoVoice

AltoVoice:AltoVoice
First stanza

TenorVoice:TenorVoice

BassVoice:BassVoice

PianoRHStaff:PianoRHVoice

PianoLHStaff:PianoLHVoice

satb-template-with-keyboard-reduction-midi.ly

The printed output should have a one-measure SATB score on four staves with lyrics and a keyboard reduction.

The MIDI output should not include the keyboard reduction. It should include an extra beat of silence where the printed output has a caesura mark.

SopranoStaff:SopranoVoice

AltoStaff:AltoVoice

TenorStaff:TenorVoice

BassStaff:BassVoice

Tempo: ♩ = 60

Lyrics: Ah ah ah ah

section-label-midi.ly

ew:

Tempo: ♩ = 60

sequence-name-midi.ly

The MIDI sequence generated from a score should get its name from the title defined in the score's `\header` block (if any). The title used for layout can be overridden for MIDI output by specifying a separate `midititle` in the `\header` block. If the score does not define a title of its own, and has no enclosing `\bookpart`, `\book`, or top-level scope with a `\header` block that defines a title, either, the MIDI sequence should get the default name.

Title shared between layout and MIDI

Tempo: ♩ = 60

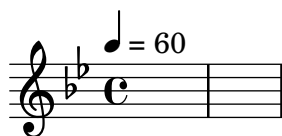
sequence-name-scoping-midi.ly

If a score has a `\header` block which defines a title, this title should override any title defined in a `\header` block of the score's enclosing `\bookpart` or `\book` (or a title defined in a top-level `\header` block) when naming the MIDI sequence generated from the score. Otherwise, if the score has no title defined, the MIDI sequence generated from the score should get named using the title defined in the `\header` block of the nearest enclosing `\bookpart`, `\book`, or top-level scope that contains a title definition.

Book

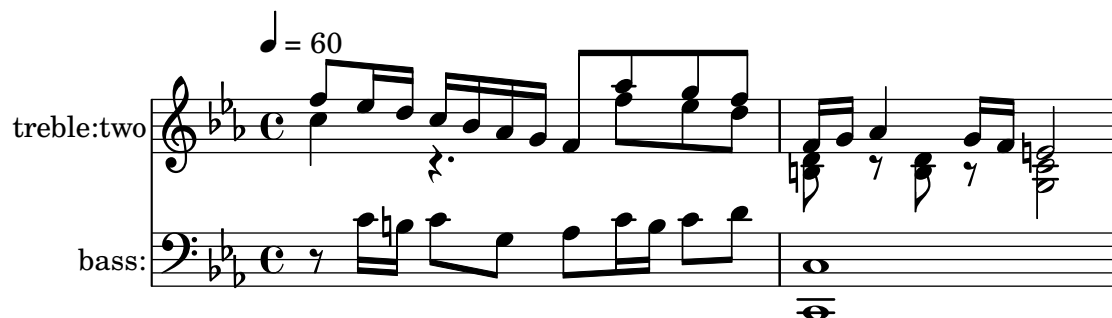
Tempo: ♩ = 60

spacer-no-notes-midi.ly



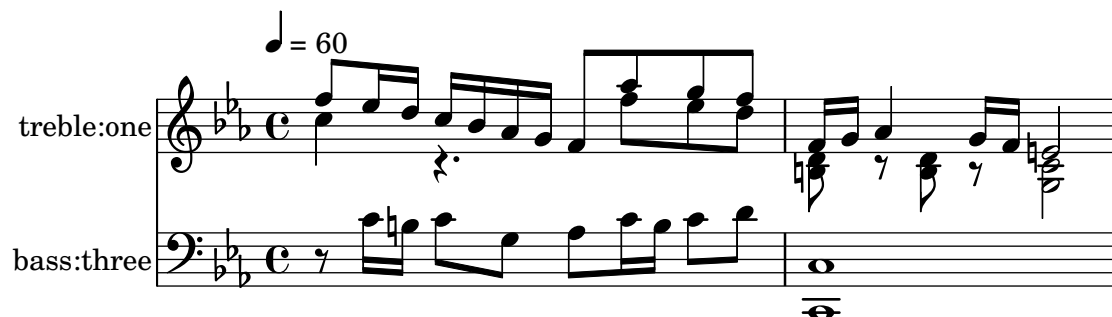
staff-map-instrument-midi.ly

Midi2ly remaps voices correctly to staves in MIDI-files that use instrument<->channel mapping when combined with voice<->track mapping. TODO: pianostaff

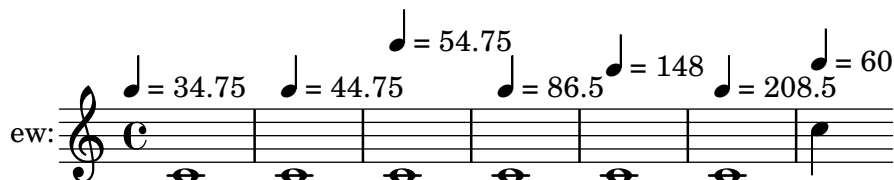


staff-map-voice-midi.ly

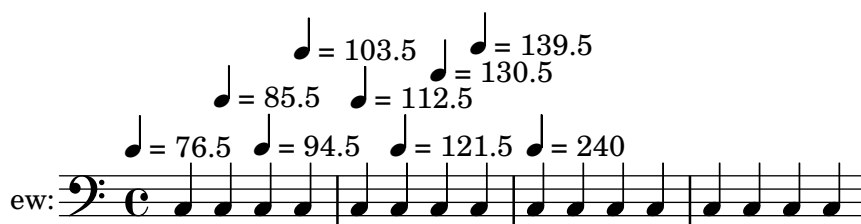
Midi2ly remaps voices correctly to staves in MIDI-files that use voice<->channel mapping when combined with staff<->track mapping. TODO: pianostaff



tempo-accel-granularity-midi.ly



tempo-accel-jump-midi.ly



tempo-accel-simultaneous-midi.ly

ew: $\text{♩} = 60$ $\text{♩} = 65.5$ $\text{♩} = 76.75$ $\text{♩} = 88$ $\text{♩} = 99.25$ $\text{♩} = 110.5$ $\text{♩} = 121.75$ $\text{♩} = 133$ $\text{♩} = 144.25$ $\text{♩} = 155.5$ $\text{♩} = 166.75$ $\text{♩} = 178$ $\text{♩} = 189.25$ $\text{♩} = 200.5$ $\text{♩} = 211.75$ $\text{♩} = 223$ $\text{♩} = 234.25$ $\text{♩} = 60$

tempo-accel-skiptypesetting-beginning-midi.ly

ew: $\text{♩} = 157.25$ $\text{♩} = 160$ $\text{♩} = 162.5$ $\text{♩} = 167.75$ $\text{♩} = 170.5$ $\text{♩} = 173$ $\text{♩} = 175.75$ $\text{♩} = 178.25$ $\text{♩} = 181$ $\text{♩} = 183.5$ $\text{♩} = 186.25$ $\text{♩} = 188.75$ $\text{♩} = 191.5$ $\text{♩} = 194$ $\text{♩} = 196.75$ $\text{♩} = 199.25$ $\text{♩} = 202$ $\text{♩} = 204.5$ $\text{♩} = 207.25$ $\text{♩} = 209.75$ $\text{♩} = 215$ $\text{♩} = 217.75$ $\text{♩} = 220.25$ $\text{♩} = 223$ $\text{♩} = 225.5$ $\text{♩} = 228.25$ $\text{♩} = 230.75$ $\text{♩} = 233.5$ $\text{♩} = 236$ $\text{♩} = 240$

tempo-accel-skiptypesetting-end-midi.ly

ew: $\text{♩} = 31.5$ $\text{♩} = 35$ $\text{♩} = 38.25$ $\text{♩} = 41.5$ $\text{♩} = 44.75$ $\text{♩} = 48$ $\text{♩} = 51.25$ $\text{♩} = 54.5$ $\text{♩} = 58$ $\text{♩} = 61.25$ $\text{♩} = 64.5$ $\text{♩} = 67.75$ $\text{♩} = 71$ $\text{♩} = 74.25$ $\text{♩} = 77.5$ $\text{♩} = 80.75$ $\text{♩} = 84.25$ $\text{♩} = 87.5$ $\text{♩} = 90.75$ $\text{♩} = 94$ $\text{♩} = 97.25$ $\text{♩} = 100.5$ $\text{♩} = 103.75$ $\text{♩} = 107$ $\text{♩} = 110.5$ $\text{♩} = 113.75$ $\text{♩} = 117$ $\text{♩} = 120.25$ $\text{♩} = 123.5$ $\text{♩} = 126.75$ $\text{♩} = 130$ $\text{♩} = 133.25$

tempo-accel-skiptypesetting-middle-midi.ly

ew: $\text{♩} = 60.5$ $\text{♩} = 61.75$ $\text{♩} = 62.75$ $\text{♩} = 64$ $\text{♩} = 65$ $\text{♩} = 66.25$ $\text{♩} = 67.25$ $\text{♩} = 68.5$ $\text{♩} = 69.5$ $\text{♩} = 70.75$ $\text{♩} = 71.75$ $\text{♩} = 73$ $\text{♩} = 74$ $\text{♩} = 75.25$ $\text{♩} = 76.25$ $\text{♩} = 77.5$ $\text{♩} = 78.5$ $\text{♩} = 79.75$ $\text{♩} = 80.75$ $\text{♩} = 82$ $\text{♩} = 83$ $\text{♩} = 84.25$ $\text{♩} = 85.25$ $\text{♩} = 86.5$ $\text{♩} = 87.5$ $\text{♩} = 88.75$ $\text{♩} = 89.75$ $\text{♩} = 91$ $\text{♩} = 92$ $\text{♩} = 93.25$ $\text{♩} = 94.25$ $\text{♩} = 95.5$

3

137 142.75 148.25 155 160.75 166.25
 136 141.5 147.25 152.75 159.5 165.25
 134.75 140.5 146 151.75 157.25 163
 133.75 139.25 145 150.5 156.25 161.75
 132.5 138.25 143.75 149.5 154 158.5 164 167.5

5

209 214.75 220.25 227 232.75 238.25
 208 213.5 219.25 224.75 231.5 237.25
 206.75 212.5 218 223.75 229.25 235
 205.75 211.25 217 222.5 228.25 233.75 239.5
 204.5 210.25 215.75 221.5 226 230.5 236 240

tempo-accel-tempo-rit-midi.ly

ew:

187.5 232.5 161 70.75
 157.5 202.5 228.5 183.5 93.25
 142.25 127.25 172.5 217.5 206 138.5 116 60

tempo-accel-warning-in-progress-midi.ly

ew:

146 213.5
 123.5 191 258.5
 100.75 168.5 236 90

tempo-accel-warning-unterminated-midi.ly

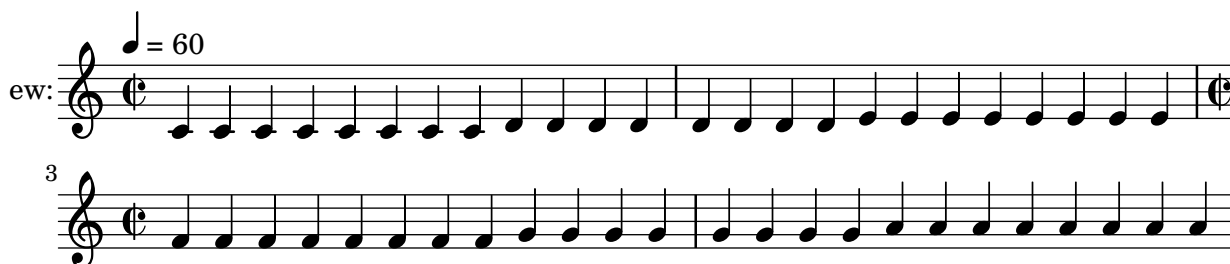
ew:

60 60 60

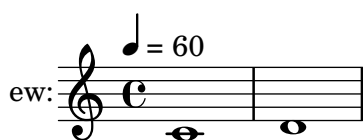
tempo-midi.ly

3.5 3.5 3.75 32769 60000000 60000000 60000000

time-signature-unsupported-midi.ly



varcoda-midi.ly



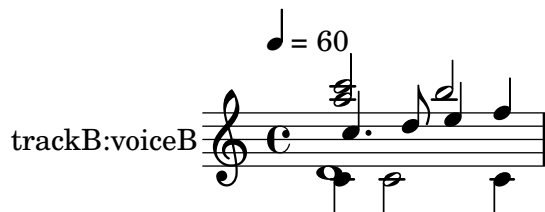
voice-2-midi.ly

midi2ly maps two voices nicely on one staff as `\voiceOne`, `\voiceTwo`



voice-4-midi.ly

midi2ly maps four voices nicely on one staff as `\voiceOne`, `\voiceTwo`, `\voiceThree`, `\voiceFour`



voice-5-midi.ly

midi2ly still produces output for a staff with five voices. However, in such cases, most probably the the correct `\voiceOne`, `\voiceX...` mapping is lost.

